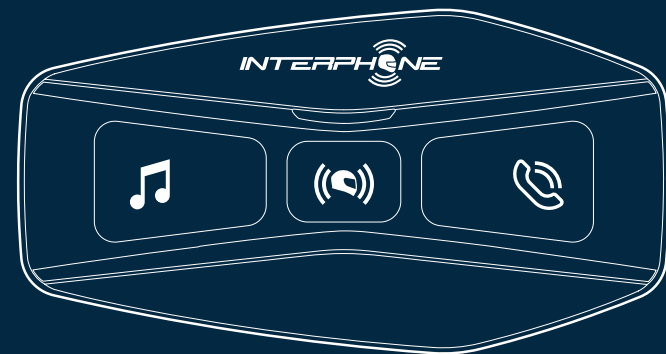
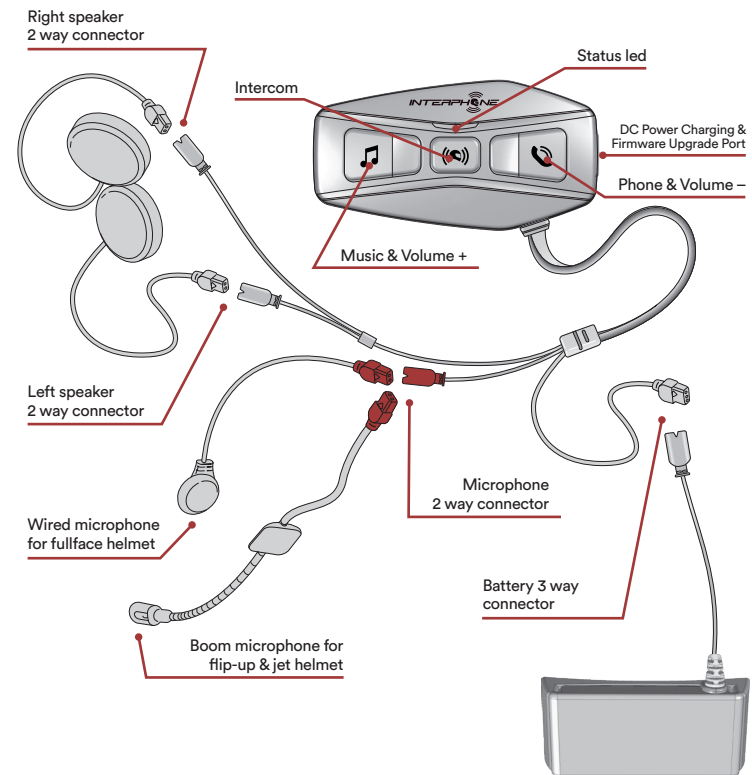


# U-COM 4

## Quick guide



### Product details

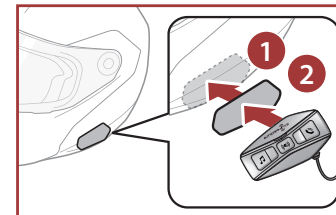


CHECK FOR SOFTWARE UPDATES  
ON WEBSITE  
[www.interphone.com](http://www.interphone.com)

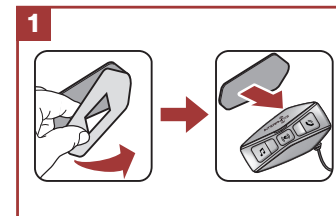
**Cellularline** S.p.A.  
Via Lambrakis 1/A, 42122 Reggio Emilia, Italy  
[www.cellularline.com](http://www.cellularline.com)

### Installation

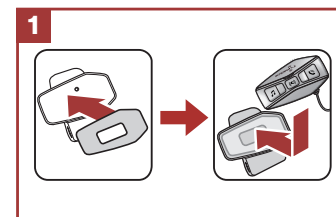
Using the hook and loop fasteners for main unit



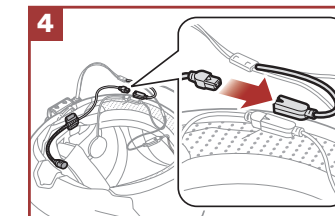
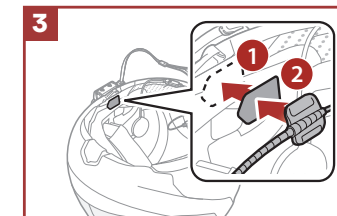
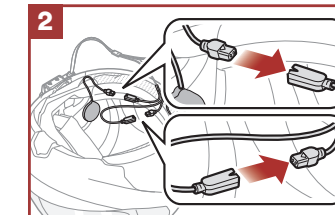
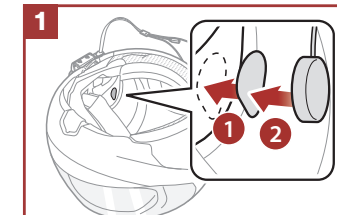
Using the double sided adhesive tapes for main unit



Using the clamp for main unit

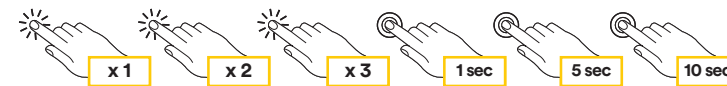


Installing the speakers and the microphone



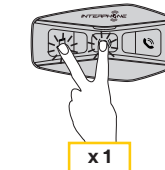
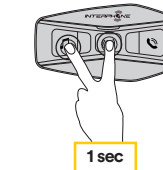
### Legenda and basic functions

Press once    Press twice    Press three times    Press and hold for 1 sec    Press and hold for 5 sec    Press and hold for 10 sec



Power on

Power off

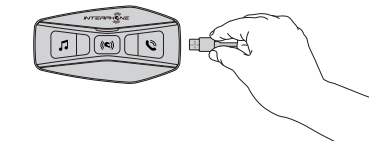


Volume increase

Volume decrease

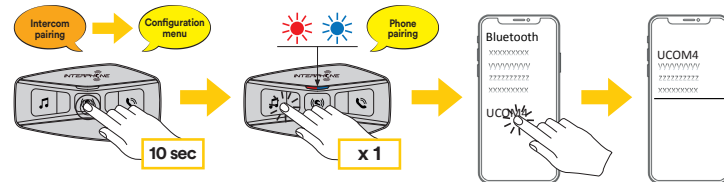


Charging

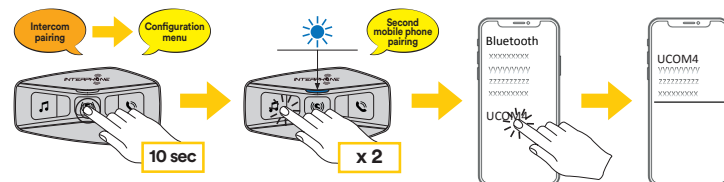


## Bluetooth® devices pairing

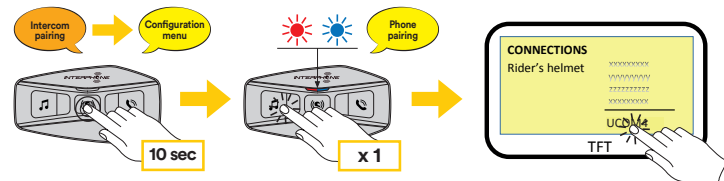
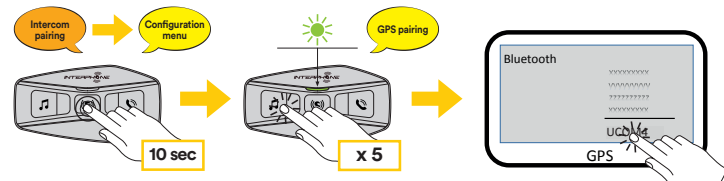
### Main phone pairing (to be done with unit on)



### Second phone pairing (to be done with unit on)



### Gps SATNAV & TFT pairing (to be done with unit on)



## Phone

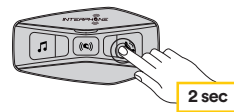
### Incoming call answer



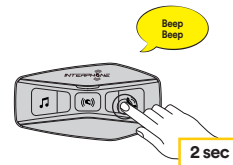
### End call



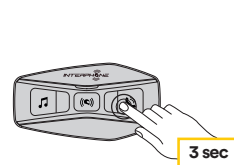
### Reject incoming call



### Phone assistant trigger



### Speed dial



## Music and FM radio

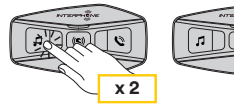
### Music play



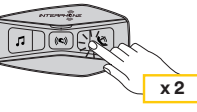
### Music pause



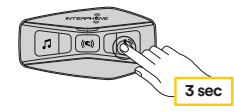
### Next track



### Previous track



### Start/stop music sharing



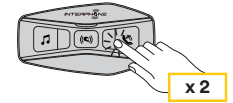
### Start/stop FM radio



### Next station

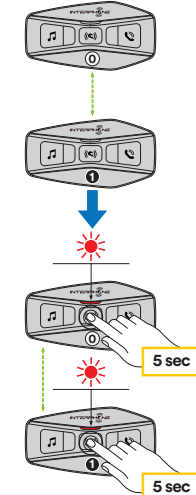


### Previous station

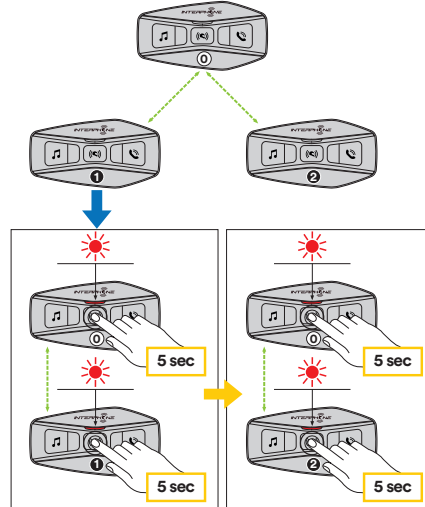


## Bluetooth® Intercom - pairing

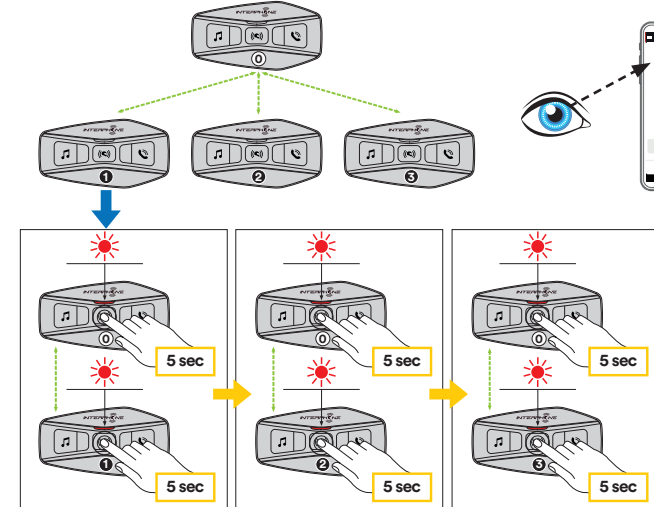
### Intercom pairing 2 units



### Intercom pairing 3 units

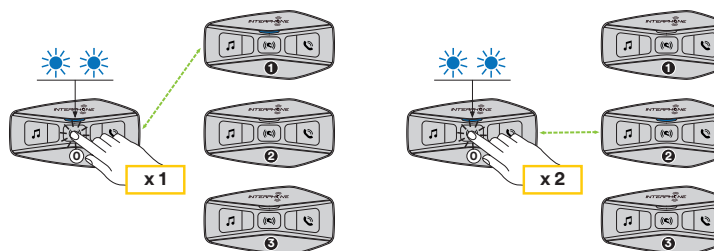


### Intercom pairing 4 units

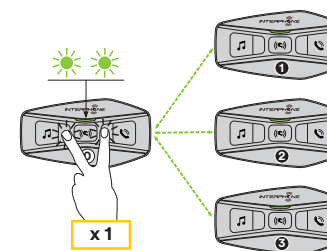


## Bluetooth® Intercom - conference

### Intercom conference

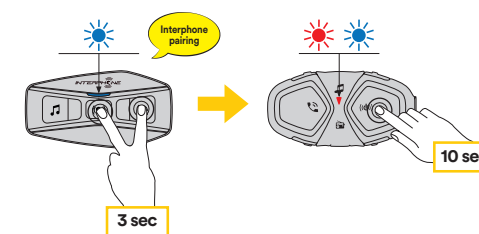


### Intercom group conference

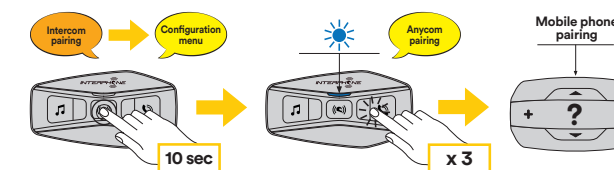


## Bluetooth® Intercom - other pairings

### Other Interphone series pairing (to be done with unit OFF)



### Anycom pairing for other brands (except Sena)



## Setup

