

AERON

FROM TRACK DNA
TO ROAD THRILL

+ **RACING**

 **SHARK**
START THE THRILL

AERON

FROM TRACK DNA
TO ROAD THRILL

FROM TRACK DNA
TO ROAD THRILL

UNLEASH YOUR RACING INSTINCT,
DOMINATE THE ASPHALT AND PUSH THE
LIMITS WITH ABSOLUTE CONFIDENCE.

THE AERON IS A DIRECT HEIR TO
THE GP AERON, WORN BY OUR MOTOGP
RACERS, AND BRINGS EXCELLENCE
FROM THE TRACK TO THE ROAD.
DESIGNED FOR THE MOST DEMANDING
ROAD RACERS, IT OFFERS EXTREME
SAFETY, EXCEEDING THE STRINGENT
ECE 22.06 STANDARDS.



SHARK +

AERON

RACING



AERON

FROM TRACK DNA TO ROAD THRILL

AERODYNAMICS AND STABILITY

Its aerodynamic design defies air resistance; each element is meticulously designed for optimal performance. Its double density expanded polyurethane (EPU) chin guard ensures a stable support and lowers the helmet position behind the bubble for better penetration into the air.

Equipped with 5 air inlets and 7 air outlets, it minimizes turbulence, reduces aerodynamic drag and propels top speed to its maximum.

EXTREME PROTECTION

Its COVA: CARBON ON VIEW & ARAMID construction, enhanced by a powerful graphic directly inspired by the MotoGP, expresses the excitement of the race.

Designed as a tribute to the helmets of the Grand Prix racers, this design draws inspiration from the intensity of the paddocks, the lightning speed in a straight line and the adrenaline of passing by millimetres.

Its dynamic lines, intense colours, and sleek graphics extend to the spoiler, asserting a bold style and a resolutely performance-orientated identity.

ERGONOMIC RACING, OPTIMIZED RACING POSITION AND PERFECT SUPPORT FOR COMMITTED ROAD RACERS.

Racing DNA, designed for the comfort of road racers. Directly inspired by the AERON GP, the AERON is designed for demanding racers who want high-level performance on the road, without compromising comfort. It incorporates all the technology and aerodynamics of a racing helmet, optimised for prolonged and intensive use.

The ergonomic design perfectly conforms to the racer's body, ensuring precise support and a natural fit, even after several hours of riding.

The aerodynamic design reduces pressure on the back of the neck and improves stability at high speeds, providing a lightweight feel and total control.

Thanks to its twin-density EPU chin strap, it provides a stable support and promotes an optimal racing position, reducing fatigue and increasing riding pleasure.

Its advanced ventilation system, consisting of 5 air inlets and 7 outlets, maintains an ideal temperature in all conditions, effectively removing heat and moisture for total comfort.

Designed for speed enthusiasts and road racing experts, this helmet combines protection, aerodynamics and comfort, providing a smooth, stress-free racing experience, mile after mile.



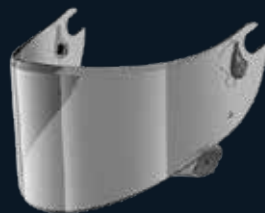
IMMERSE YOURSELF IN THE WORLD OF RACING WITH OUR VZ 100 VISOR, SPECIALLY DESIGNED FOR OUR RACING RANGE.

ENJOY UNSURPASSED VISUAL CLARITY, A WIDE FIELD OF VISION AND IMPACT-RESISTANT PROTECTION.

ADD A TOUCH OF INDIVIDUALITY TO YOUR GEAR, FOR UNCOMPROMISING PERFORMANCE.



DARK SMOKE
RACING USE ONLY
VZ10022P FU



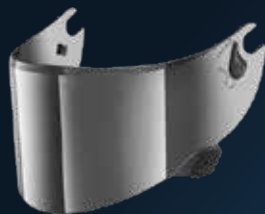
LIGHT TINTED TE35
APPROVED DAY USE ONLY
VZ10027PTE35TU



PINK **NEW**
APPROVED DAY USE ONLY
VZ10031PPNKU



GOLD
RACING USE ONLY
VZ10031P GLD



CHROME
RACING USE ONLY
VZ10031P CHR



BLUE **NEW**
RACING USE ONLY
VZ10022P BLU

FROM TRACK DNA TO ROAD THRILL

VZ100 :

COMPATIBLE AVEC AERON GP, AERON

Technical data:

- Optical class 1
- Ruggedness
- Impact protection
- Excellent sound insulation
- Variable thickness from 4 mm to 3 mm without distortion
- Anti-fog treatment
- Anti-scratch treatment
- Patented 4-point anchor system
- Side visor grip + locking pin
- Adjustment of handling resistance
- Free visor positioning
- Racing use only tints: Dark Smoke/Blue/Silver/Gold/Pink
- ECE22-06 approved colours: Clear and TE35
- Tear-off ready

HIGH DEFINITION VISION

Our visor has been designed to multiply your field of vision, minimize blind spots and boost your perception of the road:

- 4 anchor points
- Patented quick release visor system:
Quick Release Visor System

High-strength visor of optical grade 1 with variable thickness (from 4.2 mm to 2.8 mm) without visual distortion. Anti-scratch and anti-fog treated.

Pre-equipped with Tear Off.

VZ100 MAX VISION:

OPTIONAL ON AERON GP, AERON

- Max vision integrated Pinlock 120 housing
- Available only in clear tint
- Possibility to mount a tinted Pinlock film
- Optical class 1
- Variable thickness from 2.8 mm to 2 mm
- Adjustment of handling resistance
- Anti-scratch treatment
- Patented 4-point anchor system
- Side visor grip
- Free visor positioning
- Tear-off ready

AERON

FROM TRACK DNA TO ROAD THRILL

A “SECOND SKIN” EFFECT THANKS TO BEST FIT

An interior adapted to your head shape.
A 3D scanning campaign was carried out with a large sample of users to determine the fit shape that best matches each person's head shape.
This technicality guarantees comfort, support and stability.

TEXTILE TREATMENT & FINISHES

High-tech interior textile:
Alvéotech labelled Sanitized® Antimicrobial.
Easy Fit System: extra comfort for eyeglass wearers.

Several cheek pad sizes available.

Ears Pads: removable ear pads designed specifically for the comfort of your ears.

Morpho Pads: “3D pad” for cheeks.
The liner, designed in 3D, ensures optimal support
Emergency Quick Release System:
Quick and intuitive removal of cheek pads



AERON



CARBON FIBRE
STRUCTURE

NEW GENERATION COVA

Carbon on view & aramid
2 caps size



AERODYNAMIC
PROFILE

MAXIMISED VENTILATION

5 air inlets
7 air extractors
Double venturi effect



OPTICAL CLASS 1
THE BEST QUALITY

MAXIMAL VISION

Tear-offs ready



SENA FOR SHARK
INTERCOM READY

COMMUNICATE WITHOUT LIMITS

Specifically designed to fit
perfectly into its structure



ANTI-FOG
ANTI-SCRATCH



EMERGENCY SYSTEM



3D MORPHO

TIPS FROM PROS

EASE OF MAINTENANCE:

Interior textiles (cheek pads and liner) are easily re-
movable and machine washable at 30°C.

HOW TO MEASURE YOUR SKULL CIRCUMFERENCE:

To ensure that your helmet protects you effectively,
while remaining comfortable, choose the right size.
You should be firmly held without feeling pain.
The head circumference measurement is done by placing
the tape measure around the widest part of your head,
at the halfway point of the forehead and above the
eyebrows.

XS AU XXL

XS : 53-54cm / S : 55-56 cm / M : 57-58cm
L : 59-60cm / XL : 61-62cm / XXL : 63-64cm

Number of shell sizes: 2
1410 g (for a size M +/- 50 g)

IN THE BOX

- 1 "Dark Smoke or Iridium" visor
- 2 Anti-fog masks (summer/winter)
- 5 Anti-pollution filters.



AERON

RACING

AERON



DVY / GLOSSY / HE0116
FAWN

NEW



RACING

AERON

AERON



DRU / GLOSSY / HE0118
EDGY

NEW



DBU / GLOSSY / HE0118
EDGY

NEW



AERON

DCD / GLOSSY / HE0102
CARBON SKIN

NEW



DVB / GLOSSY / HE0102
CARBON SKIN

NEW



AERON

DKD / MAT / HE0103
CARBON SKIN

NEW



DAD / GLOSSY / HE0104
FULL CARBON

NEW



KMA / MAT / HE0107
DARK SHADOW

NEW





+

+

VISORS

DISCOVER CLARITY FROM
A NEW PERSPECTIVE WITH OUR
LIGHT TRANSMISSION GUIDE.

THE INDICATED PERCENTAGE
REPRESENTS THE AMOUNT OF VISIBLE
LIGHT THAT CAN PASS THROUGH THE.
EASILY SWITCH FROM TRANSPARENCY
TO THE INTENSITY OF A TINTED OR
IRIDIUM SCREEN.

TAKE POLE POSITION, REFINE
YOUR VISION AND AMPLIFY YOUR
RACING EXPERIENCE!

+

LIGHT TRANSMISSION

% LIGHT TRANSMISSION	VZ100	VZ300	VZ360	VZ390	VZ400	VZ670
CLEAR	91%	91%	91%	91%	91%	91%
CLEAR ANTI SCRATCH /ANTI FOG	91%	91%	-	-	-	-
LIGHT TINTED	-	50%	50%	50%	50%	-
LIGHT TINTED TE35	35%	-	-	-	-	-
IRIDIUM BLUE	3%	50%	12%	12%	50%	12%
IRIDIUM RED	-	50%	12%	12%	50%	12%
IRIDIUM PINK	12%	50%	-	-	50%	12%
IRIDIUM GOLD	3%	-	12%	-	12%	12%
IRIDIUM RAINBOW	-	12%	12%	12%	-	12%
IRIDIUM SILVER	3%	-	6%	6%	-	6%
DARK	3%	6%	6%	6%	6%	6%
CHROME	-	6%	-	-	6%	-

- Day & night
- Day time use only
- Racing use only

AERON

ACCESSORIES

VISORS

RACING

SENA

for SHARK

The AERON is approved to accommodate SENA Bluetooth and SENA Mesh intercoms incl. WAVE developed in collaboration with SENA.

Communicate without limits with SENA for SHARK

The location of the intercom has been specifically designed to fit perfectly into its structure. (optional)

Our latest models are approved to integrate SENA for SHARK Bluetooth et SENA for SHARK Mesh incl. WAVE, the result of a close collaboration with SENA

Design optimized for a minimal surface space. It has been designed to perfectly match the curves of our helmets. With its rich sound, advanced features and seamless integration, the SENA communication system ensures high-quality entertainment and real-time information while riding, while being remarkably discreet.



INTERCOM



SENA for SHARK - MWS (single)
SENA for SHARK - MWD (Duo)



- Mesh Group for a maximum of 24 members.
- Maximum operating distance in optimal conditions of 1600 meters
- HD speakers (diameter 40 mm)
- Developed for perfect integration with your Shark helmet. Performance, style and safety for optimal riding*
- Waterproof
- Battery life 15 h
- Bluetooth 5.2
- The intercom recharges in two and a half hours
- Advanced Noise Control™ reduces the effects of ambient noise



SENA FOR SHARK - BTS (SINGLE).
SENA FOR SHARK - BTD (DUO)



- Bluetooth System for a maximum of 4 members.
- Maximum operating distance in optimal conditions of 800 meters
- HD speakers (diameter 40 mm)
- Developed for perfect integration with your Shark helmet. Performance, style and safety for optimal riding
- Waterproof
- Battery life of 15 h
- Bluetooth 5.1
- The intercom recharges in two and a half hours
- Bluetooth Universal Connectivity
- Advanced Noise Control™ reduces the effects of ambient noise

*Compatible and approved with our entire range 22.06, except AERON GP

